

# Engineering Technician (Toolmaker & Tool and Die Maintenance Pathway) Level 3

## Apprenticeship

Toolmakers and Tool & Die Maintenance Technicians are predominantly involved in the highly skilled, complex and specialist detailed work of manufacturing and maintaining the engineering tooling used to produce components, products and assemblies. These products, assemblies and systems affect all of our daily lives, whether it be for travel such as (cars, planes, boats and rail) energy, defence, food, clothing, packaging and health including medical equipment, devices and implants such as joint replacements. This requires the application of a broad range of activities including the interpretation of Engineering drawings and technical instructions and the use of hand, machine and automated computer-controlled machine tools and measuring equipment.

Technicians must comply with applicable legislation and organisational safety requirements and be expected to work both individually and as part of a manufacturing team, working with minimum supervision, taking responsibility for the quality and accuracy of the work they undertake. They will be proactive in finding solutions to problems and identifying ways to improve the business.

They will be expected to test and adjust the systems they have built or maintained ensuring tooling, jigs, fixtures and assemblies meet the required specification. This requires the application of a broad range of skills, knowledge and occupational behaviours across a range of engineering disciplines.



Scan the QR Code for full course description, assessment and progression options from this course

### ENTRY REQUIREMENTS

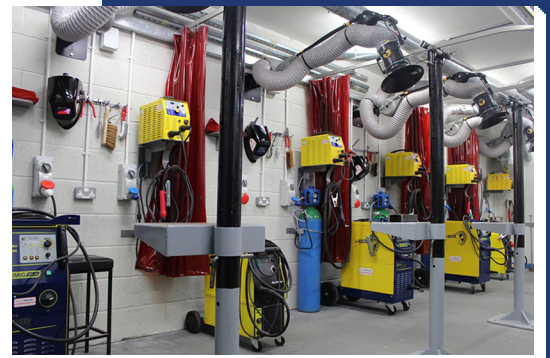
A minimum level 2 (GCSE level 4 or equivalent) in mathematics and English required.

A minimum of 4 GCSEs grade 4 (including maths & English) required.



THE PLYMOUTH  
ENGINEERING  
SKILLS  
CENTRE

THE CORNWALL COLLEGE GROUP



**Find out more and  
apply online**



# Engineering Technician (Toolmaker & Tool and Die Maintenance Pathway) Level 3

Apprenticeship

THE PLYMOUTH  
ENGINEERING  
SKILLS  
CENTRE

THE CORNWALL COLLEGE GROUP

## LOCATION & NEXT START DATE(S)

The Plymouth Engineering Skills Centre - As required



### LEVEL

Level 3

### DURATION

4 years

### ATTENDANCE

Work-based

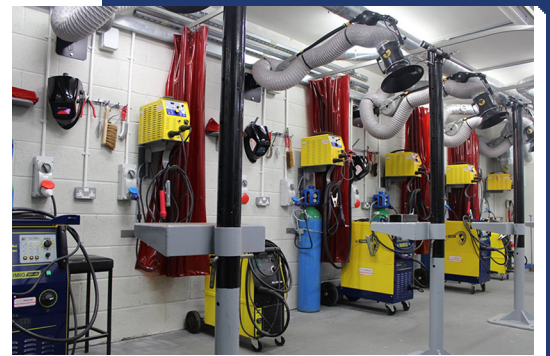
### FEES

Tuition Fees: £0.00

Fees apply to adults and HE students only. Only the most common fees scenario is shown. Actual fees may vary depending on your personal situation. Please contact us for further information. Courses listed on this website are indicative of the subject, nature and level of study. The College reserves the right to alter specific qualifications titles, awarding bodies and levels of qualification, which can change in year. Any cost may also vary, based on personal funding eligibility. The Cornwall College Group reserves the right to withdraw any course listed at any time.

## Explore Our Courses & Apprenticeships

Join us for a campus tour, meet our dedicated team, and get all your questions answered. Scan the QR code to register for our next Open Event or Taster Day.



Find out more and  
apply online

